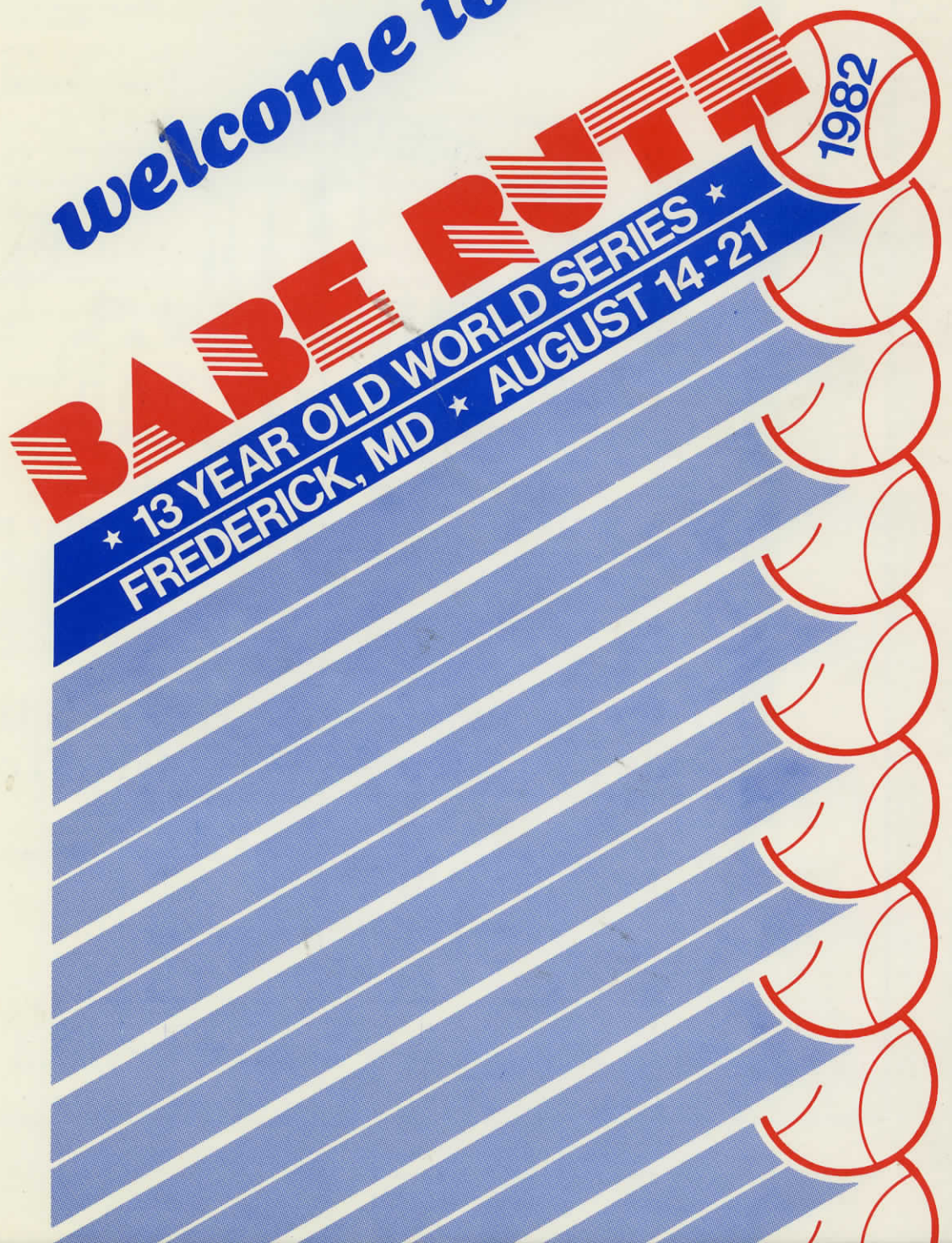


\$1.00



welcome to the...



EPH0108

The Merchants of Downtown Frederick welcome the 13-Year Old Babe Ruth World Series



OVER 80 SHOPS & SERVICES TO SERVE YOUR EVERY DESIRE

Friendly Shops
Fine Restaurants

Historic Places
Walking Tours

Antique Shops
Tourism Center

Charming Atmosphere in the Maryland Tradition



FREDERICK WORLD SERIES, INC.

Post Office Box 506
Frederick, Maryland 21701
(301) 694-9687

Dear Baseball Fans;

It is with a Great Deal of pleasure that I welcome you to the 1982 Babe Ruth World Series. A tremendous amount of time and energy have been put forth to assure all an enjoyable and rewarding Tournament.

To all the Teams participating we wish the best of luck for a Great World Series and to all of our Guests we welcome you and hope your visit to Frederick is both pleasant and memorable.

Now its time to sit back and relax and enjoy the finest Thirteen Year Old Baseball in America.

Sincerely;

Bob Roberson
Host President - 1982
13 yr.Old World Series

Sheraton Inn-Frederick

HEADQUARTERS FOR THE BABE RUTH WORLD SERIES



Home Plate

SAFE!



DON'T STRIKE OUT

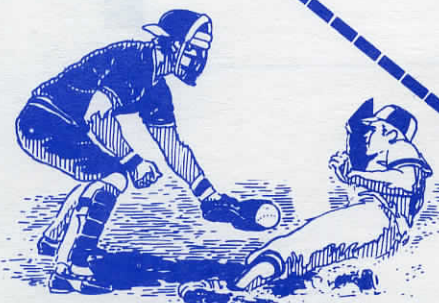
Before, during or after the game join us in Harrigan's Restaurant & Lounge where we will be featuring something different and exciting every day of the week.

AUGUST 13 TO AUGUST 21

HAPPY HOUR

Peanuts
Popcorn
& Cracker Jacks

LIVE
ENTERTAINMENT
7
NIGHTS A WK.



DAILY
LUNCH & DINNER
SPECIALS
Aug. 14
Crab Feast

Sheraton Inn-Frederick

SHERATON HOTELS & INNS. WORLDWIDE
1-270 AT ROUTE 85, FREDERICK, MARYLAND 301-694-7500
at Francis Scott Key Mall





Frederick Babe Ruth League, Inc.

July 15, 1982

Mr. Robert P. Roberson, Host President
1982 Frederick Babe Ruth World Series
P. O. Box 506
Frederick, Maryland 21701

Dear Mr. Roberson:

On behalf of the Frederick Babe Ruth League, Inc. and its Board of Directors, I would like to welcome and congratulate all the participants taking part in this 3rd Babe Ruth 13 year old world series being held in Frederick, Maryland on August 14 - 21, 1982.

We also want to extend our thanks and appreciation to the local host committee and all the hard working volunteers that made it possible to have such an event as this in our fair city.

Here's to a successful world series, and may the best team win.

Very truly yours,

Gordon H. Smith, President/1982
Frederick Babe Ruth League, Inc.

**CONGRATULATIONS
FREDERICK!**

Roy Rogers

Tastes too good to be called fast food.

**Now At Two Convenient
Locations:**

**Rt. 40 W. on the Golden
Mile & Rt. 85 across from
the FSK Mall**



**HAVE A 12 oz.
COKE FREE**

Trade-mark ®

**Redeem Only at
Roy Rogers Family Restaurants**

"Coca-Cola" and "Coke" are registered trade-marks which identify the same product of The Coca-Cola Company.



**PRESENTING
THE
FREDERICK WORLD SERIES COMMITTEE**

EXECUTIVE COMMITTEE

Bob Roberson - Host President
Gordon Smith - First Vice President - Finance Division
Larry Frum - Second Vice Pres. - Manpower Division
Bob Rankin - Treasurer
Nancy Thrasher - Secretary
Frank Martz - Attorney
Paul Mossburg - Stadium Division Director
Ed Reading - Administrative Division Director
Wayne Fox - Public Relations Division Director
Henry Groff - Operations Division Director

COMMITTEE CHAIRMEN

Personnel - Brian Hissey
Facilities - Ken Spurrier, Bob Dailey
Communications - Bob Kotchenreuther, Carol Winpiger
Advertising & Program - Sandi Comer, Ron Twentey
Souvenirs - Ron Summers, Walt Cramer
Concessions - Charlie Wastler, Don Albaugh
Manager/Coach Housing - Jane Frum
Ceremonies - Charlie Main
Banquet - Wayne and Delite Fox
Parade - Frederick Jaycees, Rob Stewart, Paul German
Decorations - Frank Higinbotham
Publicity - Don Cline
Princesses - Jane Frum, Kim Roberson
Transportation - Merhle Wise
Host Families - Mary Smith, Shirley Maly
Mechanical - Mic Mastrino
Ticket Personnel - Richard Rippeon
Ushers - Bill Lingenfelter
Program Sellers - Middletown - Walkersville Kiwanis
Souvenirs Sellers - Susanne Twentey
Concession Attendants - Tom Trott, Mary Alice Grove,
Dave Kinlaw
50/50 - Suburban Kiwanis - Bob Naylor

FACILITIES

McCurdy Memorial Field is a public facility owned and operated by the City of Frederick. It is the home of three Frederick Babe Ruth Programs, Francis Scott Key American Legion Baseball, Adult Baltimore Major League Baseball, Frederick Midget Football, the Frederick Falcons and Maryland School for the Deaf Football.

As a result of hosting the 1982 13-year old Babe Ruth World Series, over \$160,000 in improvements have been completed thanks to a joint effort of the City of Frederick, State of Maryland and the Frederick World Series Committee. Frederick now has perhaps one of the finest amateur sports facilities in the nation for use by all citizens of the city.

"MANY THANKS!"

The Frederick World Series Committee would like to express its sincere appreciation to the following companies for their contributions to McCurdy Field:

Frederick Brick Works
Frederick Trading Company
Genstar Stone Products
United Concrete Products
Barnes Cabinet Shop
Commerce Electric
R. F. Kline
Dixie Plywood Company
Pittsburgh Paints

A very special thanks goes to Bob Bowlus for his help in obtaining the materials necessary.

Also special thanks go to Bob Strine, Russ Castle and all the employees of the City of Frederick who helped make McCurdy Field the fine facility that it is.



Four Locations

7th & Motter Ave.

Downtown
13 E. Patrick St.

South & Jefferson St.

Evergreen Point
Rt. 85 & Grove Rd.

Frederick, MD

WELCOME AND GOOD LUCK TO ALL PARTICIPANTS IN THE BABE RUTH WORLD SERIES

COMPLIMENTS OF



CHRYSLER PLYMOUTH FREDERICK, Inc.

622 NORTH MARKET STREET
FREDERICK, MD 21701

*"Known for the customers
we keep"*



THE FREDERICK BABE RUTH LEAGUE

Gordon Smith	President
Doris White	Secretary
Bob Rankin	Treasurer
Charlie Wastler	Vice President - 13 Year Old
Dorsey Gilbert	Player Agent - 13 Year Old
Frank Martz	Vice President - 14-15 Year Old
Mike McCollum	Player Agent - 14-15 Year Old
Ray Mangold	Vice President - 16-18 Year Old
Wayne Long	Player Agent - 16-18 Year Old

DIRECTORS

Nancy Thrasher	President - Parents Association
Joan Boone	Treasurer - Parents Association
Ron Twentey	Publicity
Mac Phebus	Husky Park
Larry Frum	Equipment
Paul Merrill	Managers Representative
Bob Roberson	Scheduling

13 Year Old Division	52 Players
14-15 Year Old Division	112 Players
16-18 Year Old Division	90 Players
	<u>254 Total</u>



FREDERICK BABE RUTH LEAGUE

Team Sponsors

13 Year Old Prep League

Antique Imports
Day's Inn
J & K Motors
Jug Bridge Seafood

14-15 Year Old

Blue Ridge Oil
Dairy Maid Dairy
Fredericktown Bank & Trust
Freez King
Genstar Stone Products
Kiwanis Club
Rotary
Rustler

16-18 Year Old

Brown's Pizza
Eastalco Aluminum
Keyser-Garver Well Drilling
Suburban Kiwanis
V. F. W.

Thanks to these fine sponsors who help to make the Frederick Babe Ruth League one of the finest youth programs in the nation.

Welcome To Frederick and the Babe Ruth World Series

*Compliments
of*



**McHenry
Associates, Inc.**

**Automotive Parts &
Industrial Equipment**

Located on the corner of
East & Patrick Streets
Frederick, MD 21701
662-0626

Don't Strike Out

EAT AT RUSTLER®

FREDERICK COUNTY SQUARE
SHOPPING CENTER

Operating Hours
11-9 Daily,
10 PM Fri. & Sat.
663-8401



Two Rib Eye Dinners

\$5.99

Now thru Sept. 29

Coupon valid for one purchase of two Rib Eye Dinners. Dinner includes Rib Eye Steak, baked potato, roll and salad. Dinner does not include beverage or dessert. Offer valid now thru Sept. 29. Account #119-609: NY, PA, MD, VA. Customers must pay applicable sales tax. #119-610: NJ, DE. NJ state law requires tax on full retail value.

RUSTLER®

Two Steak and Shrimp Dinners

\$7.99

Now thru Sept. 29

Coupon valid for one purchase of two Steak and Shrimp Dinners. Dinner includes Steak, Shrimp, baked potato, roll and salad. Dinner does not include beverage or dessert. Offer valid now thru Sept. 29. Customers must pay applicable sales tax. Account #276-609: NY, PA, MD, VA. #276-610: NJ, DE. NJ state law requires tax on full retail value.

RUSTLER®

Westerner Hamburger Sandwich

As many as you want

99¢ each

Coupon Valid Mon. - Sat.
11 am - 4 pm

Now thru Sept. 29

1 Coupon valid for one purchase of as many
2 (Westerner) Hamburger Sandwiches as you
3 like. Offer does not include beverage or ala
4 carte items. Offer valid now thru Sept. 29.
5 Account #267-609: NY, PA, MD, VA.
6 Customers must pay applicable sales tax.
7 #267-610: NJ, DE. NJ state law requires tax
8 on full retail value.
9

RUSTLER®

1 2 3 4 5 6 7 8 9

"Welcome to Frederick!"

RONALD N. YOUNG
Mayor



GLENN L. NIKIRK
Administrative Assistant

CAROLYN R. GREINER
Executive Assistant



Aldermen

JAMES M. MURPHY
President Pro Tem
CALVIN S. BARTGIS
ALLEN G. MERCHANT
C. ARLENE PHILLIPS
H. THOMAS SUMMERS

Dear Babe Ruth Players and Guests:

On the occasion of the Babe Ruth 13-year old World Series, I would like to take this opportunity to welcome you to Frederick. We have been waiting with excitement and anticipation this special sporting event.

We were very proud to be chosen by the inspection team of the Babe Ruth Baseball organization to host this event. Hundreds of dedicated citizens have been planning and working to make this the best series yet.

We have a beautiful facility located in the heart of a community steeped in baseball tradition. We are proud of our community and its citizens for their endeavors in all aspects of life.

I hope you find the opportunity to tour Frederick. While you will find it a community replete with traditions of notables of the past, such as Barbara Fritchie, Francis Scott Key and John Hanson, you will also find it a completely modern city populated by the friendliest of people and containing many lovely churches with very active congregations.

It is a great place to live and work. We will make every effort to have you remember it as a great place to visit. Enjoy! We hope everyone leaves having had a winning experience.

Sincerely,



RONALD N. YOUNG
Mayor



City Hall, 124 North Market Street, Frederick, Maryland 21701

(301) 662-5161



Welcome To Frederick



More than 75 stores to serve you,
including six different eating
establishments.



Francis Scott Key Mall

Exit 1—B off I-270
Hours: 10 a.m.-9:30 p.m.
Phone: 662-5151

THE WHITE HOUSE
WASHINGTON

May 25, 1982

Babe Ruth Baseball is a living memorial to one of the game's finest players and one I'm sure he would have appreciated. It helps perpetuate the color, drama and skills that he brought to one of our favorite sports.

Each of the eight teams in the 1982 Babe Ruth World Series is a survivor of season-long competition, and I know the winner here will be a worthy champion. Congratulations to each of you and best wishes for a great week.

Ronald Reagan



Insurance
Since 1933



1501 East Street, Frederick, Maryland 21702
301-708-1234

Welcome To Frederick



Insurance Of Every Kind

*Frederick Underwriters, Inc., is a full-line agency,
offering all types of insurance and bonding.*

J.R. Ramsburg, Jr., President

Robert C. Lindquist, Vice President

PROPERTY & CASUALTY

Philip G. Smullen

C.K. (Scotty) Stottlemeyer

Laurie C. Barrett

Clarence E. (Chip) Jewell, III

Randall H. Lindquist

LIFE INSURANCE

Glen F. Pritchett, Mgr.

John W. (Jack) Derr, CLU

Walter T. Dunbar, CLU

Kim L. Cavenee

Frederick Underwriters, Inc.



Insurance
Since 1933



1201 East Street/Frederick, MD/662-1147
308 Delaware Road/Frederick, MD/694-9230



SENATE OF MARYLAND

ANNAPOLIS, MARYLAND 21404

EDWARD P. THOMAS
STATE SENATOR
JAMES SENATE OFFICE BUILDING
ANNAPOLIS, MARYLAND 21404

DISTRICT OFFICE:
TERRACE OFFICE BUILDING
10 WEST COLLEGE TERRACE
FREDERICK, MARYLAND 21701

HOME:
710 WYNGATE DRIVE
FREDERICK, MARYLAND 21701

July 8, 1982

Frederick World Series Committee
Bob Roberson, President
Gordon Smith, Vice President
Box 506
Frederick, Maryland 21701

Dear Bob and Gordy:

Congratulations to the Frederick Babe Ruth League for hosting the 1982 13-Year Old Babe Ruth World Series in Frederick, Maryland.

As the State Senator representing the immediate Frederick City area I know I speak for all our citizens who are so proud and thrilled at having the competition this year in Maryland—the first time the event has been held this far East.

We welcome the players, coaches, families, and friends from the eight regions and trust your visit to the Free State will be full of fun. You'll find our community to be friendly and extremely enthusiastic about baseball.

We'll be keeping a close eye on all the players in anticipation of some day seeing them climb the baseball ladder to success.

Good luck to everyone. Welcome to Maryland and Frederick.

Sincerely,

Ed Thomas

Edward P. Thomas



Dunkin' Donuts

*Fresh Donuts, Muffins, Cookies,
Brownies and Munchkins
Try Our Soups, Too.*

It's Worth the Trip!

"Welcome to Frederick, MD."

Keyser-Garver Well Drilling, Inc.

RESIDENTIAL - COMMERCIAL - INDUSTRIAL

"Our Business is Water"

Licensed & Certified
Free Estimates
Consultant Service
Contracts
Gould Pump Systems

Austin N. Garver, Pres.
Tuddie K. Garver, Sec.
Office: (301) 662-1949
9125-B Bethel Rd.
Frederick, MD 21701-2099

"Big Enough For Any Job—Small Enough To Care!"



SENATE OF MARYLAND

ANNAPOLIS, MARYLAND 21401-1991

July 12, 1982

CHARLES H. SMELSER
STATE SENATOR
CARROLL-FREDERICK, DISTRICT 4

COMMITTEES:
BUDGET AND TAXATION
EXECUTIVE NOMINATIONS

OFFICE ADDRESS:
JAMES SENATE OFFICE BUILDING
ANNAPOLIS, MARYLAND 21401-1991
PHONE: 841-3704
PHONE-CARROLL COUNTY 848-2770
PHONE-FREDERICK COUNTY 898-9666

Mr. Bob Roberson, President
Frederick World Series Committee
Box 506
Frederick, Maryland 21701

Dear Bob,

A sincere WELCOME to the players, their families, friends, officials, visitors and all attending, who together will make the 13 Year Old Babe Ruth World Series a great success.

I especially commend the players who have combined hard work and talent to make it possible for their respective teams to represent the various regions of our country in the 1982 Series.

I trust that our guests will enjoy the warm Frederick County hospitality that is a trade mark of our community.

A special thanks to the Frederick World Series Committee for their untiring efforts in making it possible for Frederick City to host their exciting event that is so important to our community and the State of Maryland.

Sincerely,

Charles H. Smelser

P.S. May the best team win!



Quality accommodations at an affordable price.

Rooms complete with two double beds, color television, AM/FM radio, and full bath.

24 Hour DayBreak Restaurant, Gift Shop, Pool, and Gameroom.

September Days Club for senior citizens features discounts with a minimum charge.

American Express, VISA and Master Card accepted.



Open 24 Hours

Try a selection from our menu offering breakfast, lunch and dinner specialties.

Or have a DayBreaker, breakfast in a glass.

I-270 at MD Rte. 85, Frederick, MD 301-694-6600



Office of the Commissioner

Bowie K. Kuhn
Commissioner

Dear Mr. Tellefsen:

I am delighted to extend the enthusiastic best wishes of Professional Baseball to you and all those associated with Babe Ruth Baseball.

I know the fans of Frederick, Maryland, will be entertained and delighted by the quality of baseball they will see in the Series.

Professional Baseball salutes the players, coaches, the efficient administrative staff and the thousands of devoted parents and fans who donate their time and effort to Babe Ruth Baseball.

Sincerely yours,

BKK/ms

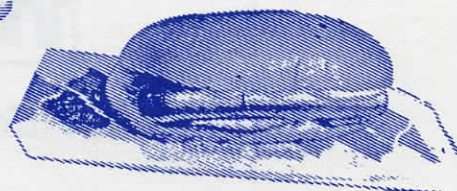
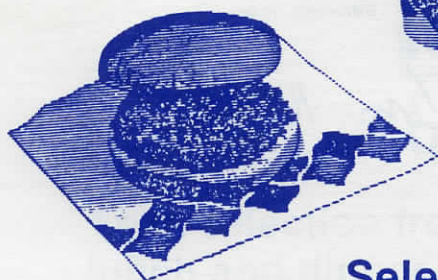
75 Rockefeller Plaza
New York, N.Y. 10019
(212) 586-7400

Dairy Queen



Francis Scott Key Mall

**JOHN W. LAMP
OWNER - OPERATOR**



Selections Available

*Reg. U.S. Pat. Off., AM. D.Q. Corp. (c) 1974 Am. D.Q. Corp.



THE NATIONAL LEAGUE
OF
PROFESSIONAL BASEBALL CLUBS

ONE ROCKEFELLER PLAZA, SUITE 1602
NEW YORK, NEW YORK 10020
212-582-4213

April 28, 1982

Mr. Ronald Tellefsen
President
BABE RUTH BASEBALL
1770 Brunswick Avenue
Trenton, NJ 08638

Dear Ronald:

On behalf of the National League may I congratulate all the participants in the 13-Year-Old World Series in Frederick, Maryland. We all appreciate the skill and hard work which brought you here for these games.

I would also like to thank and congratulate all the parents, coaches and other staff members who have participated and contributed to this fine program. All of us in Baseball know how important Babe Ruth Baseball is to our youth.

Congratulations and the best of luck to all.

Sincerely,


Charles S. Feeney
President

Welcome to...

The **Avalon**



Your Host Bill Delawter

Route 26
Liberty Road
Mount Pleasant, Maryland



THE AMERICAN LEAGUE OF



PROFESSIONAL BASEBALL CLUBS

280 PARK AVENUE

NEW YORK, N. Y. 10017

1982

Mr. Ronald Tellefsen,
President,
Babe Ruth Baseball
1770 Brunswick Avenue
P.O. Box 5000
Trenton, NJ 08638

Dear Ron:

It is a pleasure once again to congratulate the 13-year-old participants in the Babe Ruth Baseball World Series, as they meet in Frederick, Maryland, this year.

They are part of a fine program, along with your officials, volunteers and administrators, and we are certain they will enjoy a wonderful experience in your World Series competition.

On behalf of the entire American League, all best wishes for a great World Series.

Sincerely,

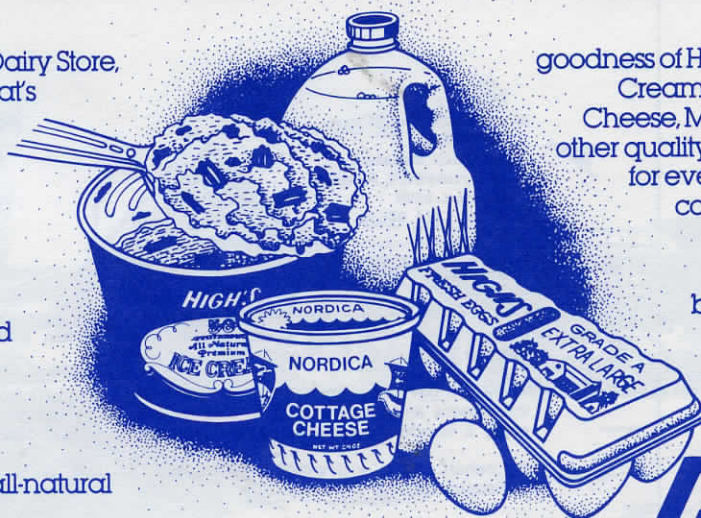
L.S. MacPhail, Jr.
President

When you own your own farm, you never have to farm out quality.

Behind every High's Dairy Store, there's a High's farm. That's what makes High's, the convenience store, so different.

With our own farm right in our own backyard we can control quality better so you're sure of getting old fashioned farm-freshness every time.

This money-saving, straight line distribution also lets you enjoy the all-natural



goodness of High's Premium Ice Cream, Nordica Cottage Cheese, Milk, Cream — and other quality dairy products — for even less than many competitive brands.

Close-by High's. We give you the best of both worlds.

The new.
And the old.

HIGH'S
DAIRY STORES



Ron Tellefsen



Bob Curran



Babe Ruth Baseball

INTERNATIONAL HEADQUARTERS
1770 Brunswick Avenue ... P. O. Box 5000
TRENTON, NEW JERSEY 08638
(609) 695-1434

President
RONALD TELLEFSEN
Vice President/Secretary
JEANNE B. LAYTON
Commissioner
WILLIAM F. RICK, JR.

August 1, 1982

Board Members

Chairman of the Board

ROBERT M. CURRAN
South Boston, MA

JOHN COOPER
Westville, NJ

BOB DICKSON
Alexandria, IN

ALLEN L. ELLIOTT
British Columbia, Canada

VERNON (LEFTY) GOMEZ
Novato, CA

DONALD JONES
Jefferson City, MO

GEORGE LALLY
Norwood, MA

LARRY MAGERS
Miami, FL

FLOYD MARKHAM
Portland, OR

ERNEST P. PAPAZOGLOU
Lynn, MA

DICK RICHARDSON
Charlotte, NC

FRANK RINAUDO
St. Francisville, LA

RONALD G. SCHEID
Hayward, CA

BILL SMITH
Chickasha, OK

HARRY SMITH
Hamilton Square, NJ

DUANE WARD
Wheatland, WY

Mr. Bob Roberson, Host President
1982 BABE RUTH 13 YEAR OLD WORLD SERIES
313 Thomas Avenue
Frederick, Maryland 21701

Dear Mr. Roberson:

As President and Chairman of the Board respectively of Babe Ruth Baseball we extend our sincerest congratulations to the nine participating teams in the Babe Ruth 13 Year Old World Series.

A very special word of thanks is due you and your committee for the large amount of effort put forth in hosting this World Series. Without the fine dedication from your committee an event of this magnitude could not be successful.

Once again we thank each of the volunteers and are certain the 1982 13 Year Old World Series will be a rewarding and memorable experience for all.

Sincerely,

Ronald Tellefsen
Ronald Tellefsen
President

Robert M. Curran
Robert M. Curran
Board Chairman

BABE RUTH BASEBALL

RT/RMC:gp

A Non-Profit Tax-Exempt Organization for 6 thru 18 Year Old Players



President
RON TELLEFSEN



Chairman of the Board
ROBERT M. CURRAN



Vice President/Secretary
JEANNE B. LAYTON



Commissioner
WILLIAM F. RICK, JR.



BOARD OF DIRECTORS

The International Babe Ruth Board of Directors, composed of not more than 17 persons . . . including the Chairman of the Board and the President . . . directs the affairs and policies of Babe Ruth Baseball. The eight Regional Commissioners serve as Board members along with eight "at large" members who are volunteers from all walks of life, representing the combined thinking of Babe Ruth Baseball's adults at all levels of administration.

ROBERT M. CURRAN, Chairman
South Boston, MA

JOHN COOPER
Westville, NJ

ROBERT DICKSON
Alexandria, IN

ALLEN ELLIOTT
Richmond, B.C., Canada

VERNON (LEFTY) GOMEZ
Novato, CA

DONALD JONES
Jefferson City, MO

GEORGE LALLY
Norwood, MA

LARRY MAGERS
Miami, FL

FLOYD MARKHAM
Portland, OR

ERNEST P. PAPAZOGLU
Lynn, MA

DICK RICHARDSON
Charlotte, NC

FRANK RINAUDO
St. Francisville, LA

RONALD SCHEID
Hayward, CA

BILL SMITH
Chickasha, OK

HARRY SMITH
Hamilton Square, NJ

DUANE WARD
Wheatland, WY

ADMINISTRATION

The administration of Babe Ruth Baseball at the International Headquarters office is handled by a 10-member full-time paid staff. However, each Babe Ruth league is an organization with authority to administer its own program within the framework of the Babe Ruth Baseball rules and regulations.

BABE RUTH HEADQUARTERS STAFF



Noma Bell (seated). Grace Paglione, Theresa Caprio,
Diana Harper, Grace Smith, Joe Courtney, Catherine Newburg.

BABE RUTH BASEBALL REGIONAL COMMISSIONERS

NEW ENGLAND REGION

ERNEST P. PAPAZOGLU
71 Tracy Avenue
Lynn, Mass. 01902
(617) 595-7603

MIDDLE ATLANTIC REGION

JOHN COOPER
8 Cordelia Ave.
Westville, N.J. 08093
(609) 845-3837

OHIO VALLEY REGION

ROBERT DICKSON
R.R.4, Box 332F
Alexandria, Ind. 46001
(317) 724-4883

SOUTHEAST REGION

DICK RICHARDSON
P.O. Box 32006
Charlotte, N.C. 28232
(704) 333-3958

MIDWEST PLAINS REGION

DONALD JONES
1111 Leslie Blvd.
Jefferson City, Mo. 65101
(314) 635-6667

SOUTHWEST REGION

FRANK RINAUDO
P.O. Drawer 10
St. Francisville, La. 70775
(504) 635-3488

PACIFIC NORTHWEST REGION

DUANE WARD
101 12th Street
Wheatland, Wyo. 82201
(307) 322-3759

PACIFIC SOUTHWEST REGION

RONALD G. SCHEID
3625 Elkgrove Court
Hayward, Calif. 94542
(415) 581-6879

REGIONS

NEW ENGLAND

Connecticut
Maine
Eastern Massachusetts
Western Massachusetts
New Hampshire
Rhode Island
Vermont

MIDDLE ATLANTIC

Delaware
Maryland
Northern New Jersey
Southern New Jersey
Metro New York
Upstate New York
Pennsylvania

OHIO VALLEY

Illinois
Indiana
Kentucky
Michigan
Ohio
West Virginia
Wisconsin

SOUTHEAST

North Alabama
South Alabama
Florida
Georgia
Mississippi
East North Carolina
West North Carolina
South Carolina
Tennessee
Virginia

MIDWEST PLAINS

Colorado
Iowa
Kansas
Minnesota
Missouri
Nebraska
North Dakota
South Dakota

SOUTHWEST

Arkansas
Louisiana
New Mexico
Oklahoma
East Texas
South Texas
West Texas

PACIFIC NORTHWEST

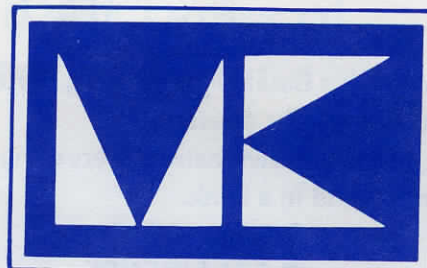
Alaska
British Columbia
Idaho
Montana
North Oregon
South Oregon
Washington
Wyoming

PACIFIC SOUTHWEST

Arizona
Northern California
Central California
Southern California
Guam
Hawaii
Nevada
Utah

MORGAN- KELLER, INC.

GENERAL CONTRACTORS



P.O. Box 155
Myersville, Md. 21773

(301) 293-2344



Whether it's Baseball or Banking, both
require the right delivery.
Let Fredericktown deliver everything you
want to find in a bank.

- SERVICE
- CONFIDENCE
- RELIABILITY

We deliver 'em all!

Fredericktown

BANK & TRUST COMPANY

MEMBER FDIC



INTERNATIONAL BOARD MEMBERS
ASSIGNED TO THE
BABE RUTH WORLD SERIES TASK FORCE



Bill Smith



Robert Dickson



George Lally

GAME ANNOUNCERS

Wayne Long
Bryan Hissey

OFFICIAL SCORER

Howard Selby

SCOREBOARD OPERATOR

Phil Selby

PRESS BOX RUNNERS

John Rhodes
Brad Korrell

BAT BOYS

Charles Miller
Chase Davis
Chris Long
Danny Martz
Matthew Nester
John Mangold
Michael Cramer
Greg Blough
Larry Goines

BALL BOYS

Charles King
Ronnie Printz
John Edwards
Paula Clark
Mike Burns
David Stine
Joey Dockendorf
Christy Fogle
Bill Benton
David Blackledge
John Walker
Mike Smith
Mike Weiss
Mickey Blank
Robbie Fox
Christopher Stup
Todd Perry
Bryan Gilbert

Kilby's Appliance Service

"WE SERVICE WHAT WE SELL"

Specializing in the
Sale & Repair of
Vacuum Cleaners,
Electric Shavers
and All Types of
Small Appliances

M.D. KILBY, JR.
OWNER

FREDERICK SHOPPING CENTER
FREDERICK, MD 21701
663-0181

*FORMERLY
WATERS APPLIANCE SERVICE*

NEW ENGLAND CHAMPIONS



SOUTH BOSTON

FIRST ROW: L-R, Tony Galvin, John Gwynn, Paul Walsh, Greg Yanovitch, Paul Joseph. SECOND ROW: Keith Callow, Ed Yalmokas, Mike Doyle, Mike Burke, Dan Suplee. STANDING: Bub McGarrell, Mike Turner, Matt Mullen, Steve McKenna, Domenic Sulfaro.

Transportation Provided By: Fredericktowne Toyota, Inc.; Burdette Brothers Pontiac Inc.

PRINCESSES

Sheri Killen



Kathy Hart



Khrissy Rhodes



MIDDLE ATLANTIC CHAMPIONS



ST. BERNARD, BROOKLYN NEW YORK

FIRST ROW: L-R, Ralph Mattiello, Marc Shiffman, Michael Maisano, Samuel Martinez, Julian Kilichowski. STANDING: Manager, Steve Bort, Vincent Mustazza, Patrick Green, Robert Sambone, Lawrence Schwartz, Patrick Solomita Jr., Coach, Pat Solomita. NOT PICTURED: Coach, Anthony Solomita, Andre Verderame, Brian Betancourt, Boris Elenbogen, Gregory Johnson, Brian Pena.

Transportation Provided By: Tate Chrysler-Plymouth Inc.; Bogley Chevrolet, Inc.

PRINCESSES

Robin Foster



Leslie Ward



Sophia Peet



OHIO VALLEY CHAMPIONS



APPLETON, WISCONSIN

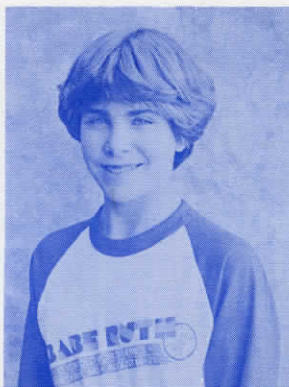
FIRST ROW: L-R, Steve Oshea, Mike Ferry, John Lindberg, Chad Bork, Bob Rassmussen. SECOND ROW: Mike Herbeck, Steve Eastman, Steve Kamke, Brian Paradeis, Brian Sommers, Coach, Mike Verstager. STANDING: Manager, Mike Clish, Dennis Priebe, Scott Jungwirth, Dan Flitsch, Rob Kahl, Reed Van Handel, Joe Krueger, Coach, Tom Stein.
 Transportation Provided By: Shockley Volkswagen-Audi, Inc.; Middletown Ford.

PRINCESSES

Cami Hardisty



Laurie Staley



Jill Jepsen



SOUTHEAST CHAMPIONS



NASHVILLE, TENNESSEE

FIRST ROW: L-R, Mark Smith, Steven Hooper, Ken Jenkins, Sam Fitch, Scott Hood, Barry Cohvell, Tony Sneed, Billy Best. STANDING: Coach, Lowe Prescott, Manager, Don Austin, Del Hickman, Jeff Trull, Carl Emery, Anthony Hager, Shane Gatlin, Jerry Meyer, Robbie McNair, Coach, Jim Jefferson.

Transportation Provided By: Model Garage Chevrolet-Pontiac, Inc.; Precision Motors - BMW-Fiat, Inc.

PRINCESSES

Doris Graham



Tracey Snoots



Julie Abdinoor



★★★★★

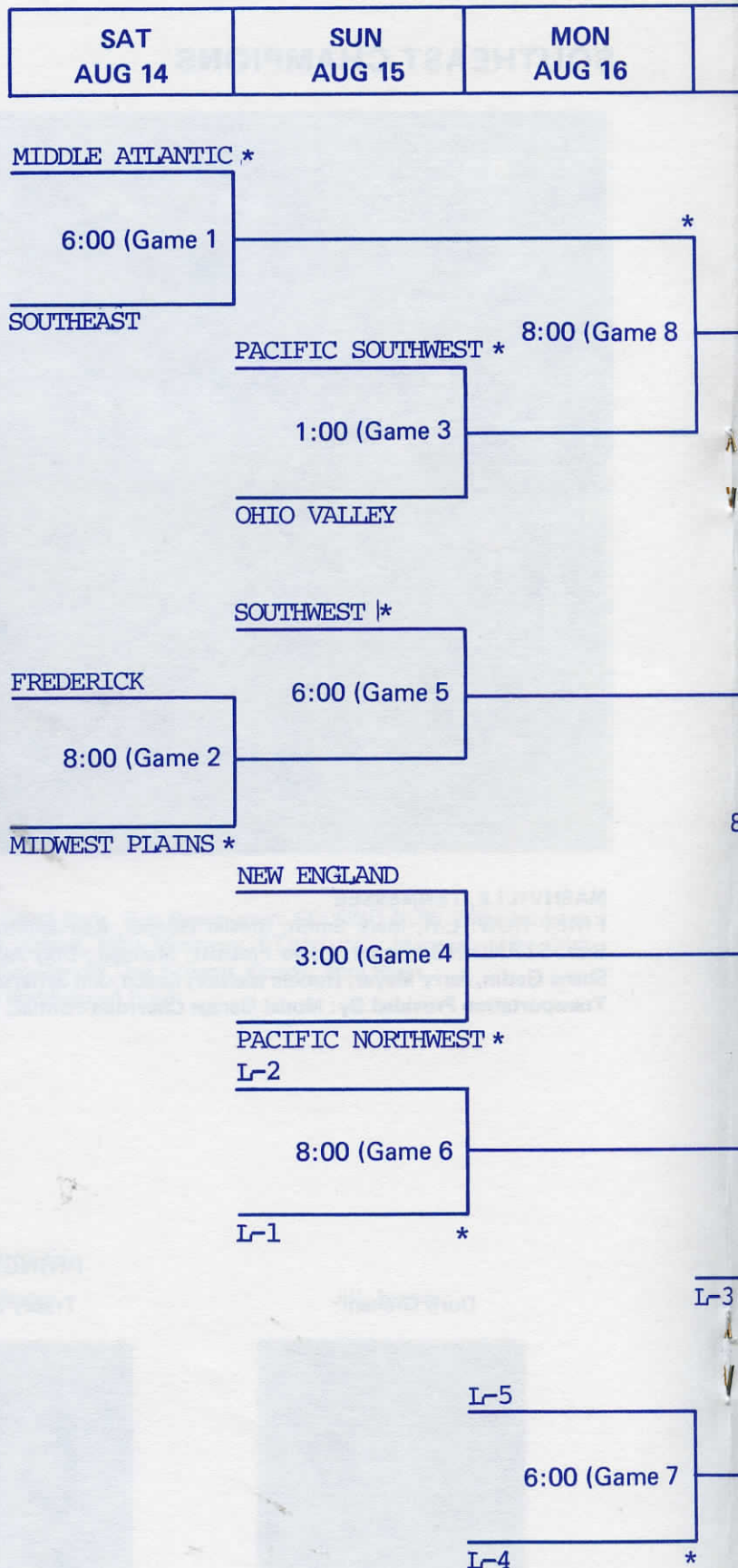
Welcome to 1982 13 Year Old World Series



Coca-Cola and "Coke" are registered trade-marks which identify the same product of The Coca-Cola Company.

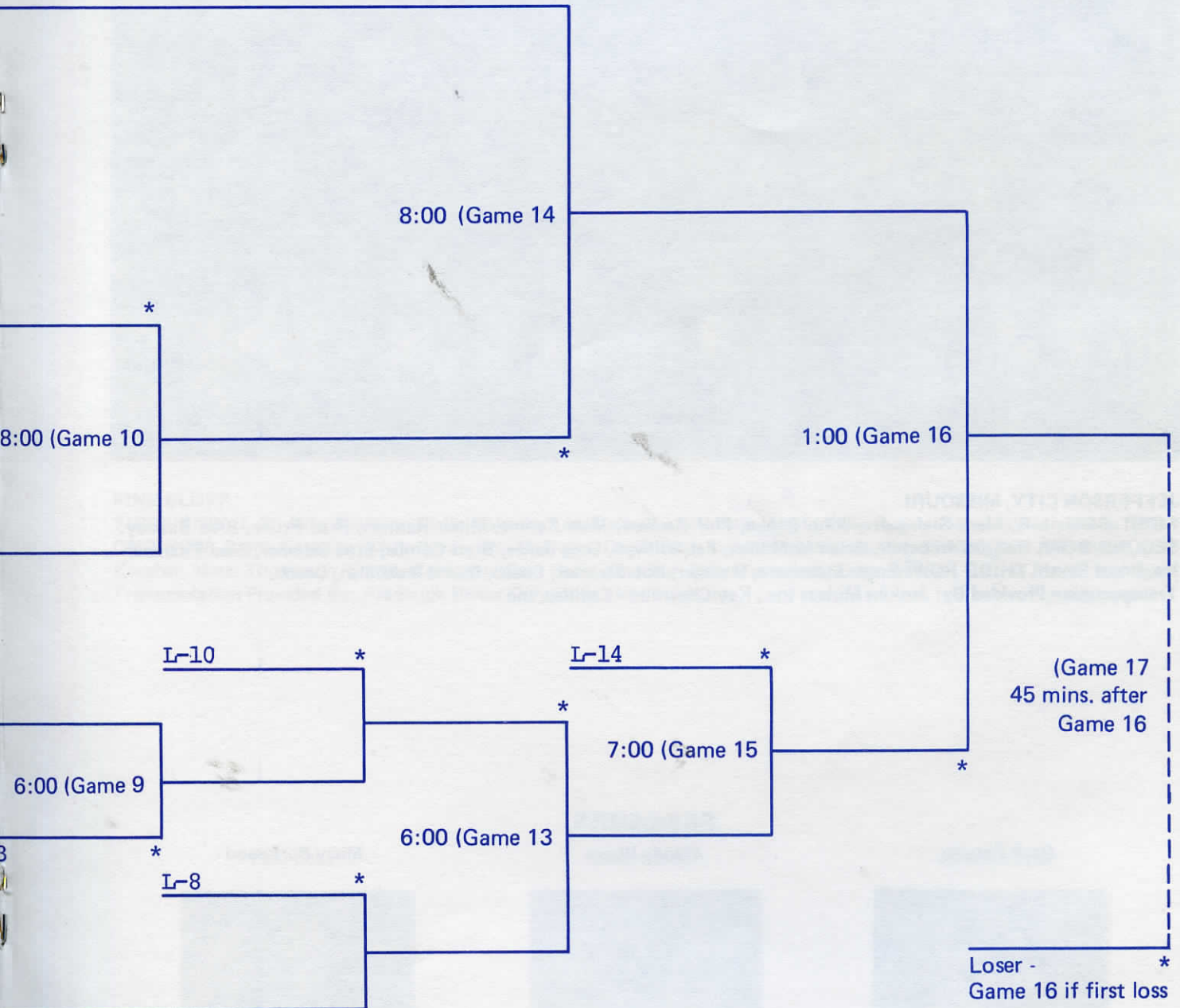
**Mid-Atlantic
Coca-Cola Bottling Company, Inc.**

★★★
1705 North Market Street
Frederick, Maryland 21701



TUE AUG 17	WED AUG 18	THU AUG 19	FRI AUG 20	SAT AUG 21
---------------	---------------	---------------	---------------	---------------

* Indicates Home Team - Firstbase Dugout



Coke *adds life to...*
the seventh inning stretch

MIDWEST PLAINS CHAMPIONS



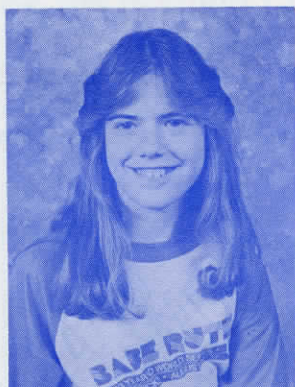
JEFFERSON CITY, MISSOURI

FIRST ROW: L-R, Mark Steinmetz, John Benke, Phil Rackers, Matt Kemna, Mitch Herman, Brad Friley, Brad Binkley.
SECOND ROW: Rob Bernskoetter, Brian McMillian, Pat Sullivan, Greg Jones, Brett Combs, Brad Scrivner, Brad Fitzmaurice, Bruce Smith. THIRD ROW: Roger Steinmetz, Manager, Bob Scrivner, Coach, Darrel McMillian, Coach.

Transportation Provided By: Jenkins Motors Inc.; Key Chevrolet - Cadillac, Inc.

PRINCESSES

Gené Fouché



Wendy Wages



Missy Portwood



SOUTHWEST CHAMPIONS



PINE BLUFF

FIRST ROW: L-R, John Olaimy, Chris Roberts, Lee Rush, Bart Roberts, Marty Gilbert, Sean Harrison, Jon House. SECOND ROW: Brent Gasaway, Chris Bryan, Wes McNulty, Doyle Ray, Ray Pulling, Ron Roller. STANDING: Alan Wood, Lee Koschel, Mark Thompson, Scotty Compton, Sam Cook, Coaches, Billy Townsend, Dean Wetzler, Ronnie Roller, Manager. Transportation Provided By: Frederick Motor Company; Ideal Buick, Inc.

PRINCESSES

Pam Baker



Vicki Casseen



Jennifer Lolli



PACIFIC NORTHWEST CHAMPIONS



IDAHO FALLS, IDAHO

FIRST ROW: L-R, Dan Trube, J.R. Brown, Lenny Widerburg, Mike Bennett, Mike Summers, Rod Hansen, Tim Spanbauer

SECOND ROW: Coach Cat Thompson, Coach Trube, Scott Charleton, Ryan Teel, Mark Bivens, Lynn Pickett, Theron Hinckley, Derek Sprague, Paul Reeser, Pat Duffin, Manager Keith Brown

Transportation Provided By: Grimes Truck Center

PRINCESSES

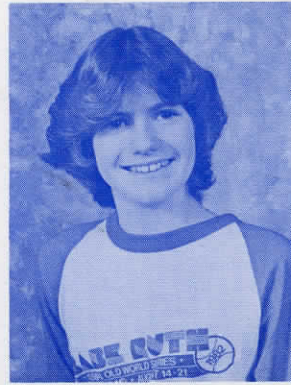
Julie Hoffman



Carolee Pritchett



Becky Thomas



PACIFIC SOUTHWEST CHAMPIONS



SOUTHERN CALIFORNIA

FIRST ROW: L-R, Dave Gilaldo, Rick Dominguez, Gerry Santillano, Charles Williams, Chris Rabine, Mike Hart. SECOND ROW: Mike Gomez, Kim Taer, Sung Jinko, Dave Prossor, Enrique Martinez. STANDING: Chuck McMichael, Manager, Randy Wallace, Ted Velasquez, Steve Heiber, Mike Dennis, Dick Decker, Coach, Max Rabine, Coach. Transportation Provided By: Sawicki Chevrolet Olds Inc.; Renn Kirby Pontiac, Inc.

PRINCESSES

Pamela O'Neal



Linda Brunk



Debbie Boone



HOST TEAM—FREDERICK



FIRST ROW: Larry Routzahn, Matt Thrasher, Shawn Putman, Corey Simms, Jerry Kephart, SECOND ROW: Rodney Cecil, Ed Jeans, John Alexander, Eric Whitmore, Noel Miller, STANDING: Manager, Larry Ahalt, Coach, Bobby Dudrow, Frank Randolph, Brian Haight, J.R. Bowie, Bryan Hissey, Todd Blank, Coach, John Hammond.

PRINCESSES

MASCOT
Shannon Trampp



Melissa Gowen



Allison Lewis



HONORARY PRINCESS
Jennifer Moore



Jennifer Martin



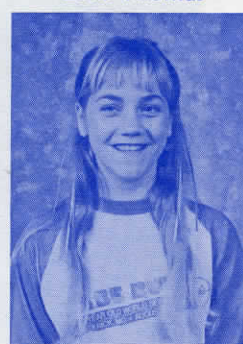
Terri Michael



Besky White



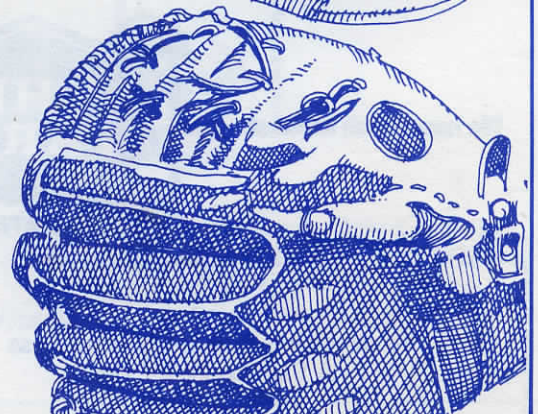
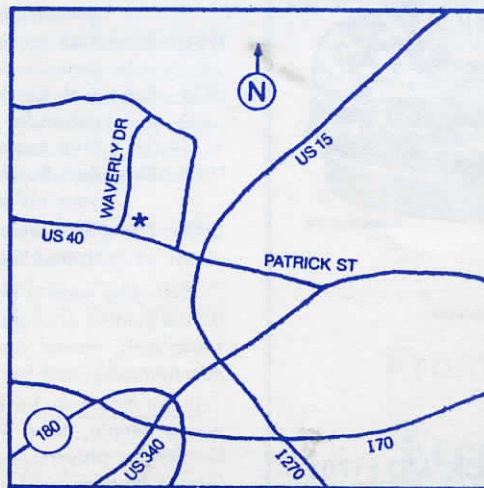
Leda Thomas



A "Great Indoors" Welcome To All Of You Babe Ruth Baseball Fans!!!

When it comes to Shopping...
FREDERICK TOWNE MALL covers all the
bases with EYERLY'S, MONTGOMERY WARDS
and JC PENNEY...and over 70 other stores and
services, including movies, family amusement
center, snack bars and restaurants!

Within easy reach of
everywhere on U.S.
Rt. 40-West in
Frederick.



Frederick

Towne

MALL

Mall Hours:
10 AM 'til 9:30 PM
Mon.-Sat.
"The Great Indoors"



FAMILY RESTAURANT

Hamburger Hall of Fame: ENJOY!



317 S. JEFFERSON ST., FREDERICK, MD 21701

We have fresh ideas at



FAMILY RESTAURANT

FREE

(With This Coupon)

16 oz. Drink When You Purchase

A Sandwich & Fries

Expires Nov. 1982

BABE RUTH BASEBALL

Babe Ruth Baseball is a youth-oriented amateur baseball program currently serving nearly 330,000 youths ages 18 and under. It is the largest teenage regulation baseball program in the world, serving close to 16,000 teams in some 2,600 leagues in all 50 states and Canada.

More than 989,000 volunteers are involved in the program which is dedicated to the following "sportsmanship" code":

- Develop a strong, clean, healthy body, mind and soul
- Develop a strong urge for sportsmanship like conduct
- Develop understanding of and respect for the rules
- Develop courage in defeat, tolerance and modesty in victory
- Develop control over emotions and speech
- Develop spirit of cooperation and team play
- Develop into real, true Citizens

Some highlights of Babe Ruth Baseball include:

1951—Babe Ruth Baseball was founded in Hamilton Township, a suburb of Trenton, N.J. to provide wholesome amateur baseball for 13, 14 and 15-year-old players.

1952—Babe Ruth Baseball held its first World Series for 13-15 year-old division in Trenton, N.J.

1966—Babe Ruth Baseball, recognizing the need for an older division, formed the 16-18 year-old division.

1968—Babe Ruth Baseball held its first World Series for 16-18 year-old division in Morristown, N.J.

1974—Babe Ruth Baseball, in order to provide greater participation for younger players, formed the Babe Ruth Prep League limited to 13-year-old players.

1980—Babe Ruth Baseball held its first World Series for the 13-year old division in Jamestown, N.Y.

1982—Babe Ruth Baseball instituted its Bambino Division for those players 12-and-under.

Promoting what is good for youth has been, and continues to be the guiding principle of the Babe Ruth program which teaches basic skills, mental and physical development, basic ideals of sportsmanship and fair play.

In an effort to have an all-inclusive baseball program for young people, Babe Ruth Baseball has adopted the Bambino Division for players 12-and-under. The Bambino Division will be used in all states and in Canada starting with the 1982 season.

The Bambino Division was field tested in several states during the 1981 season. Because of its tremendous reception and success in those areas, Babe Ruth Baseball's International Board voted to expand the division.

SCOREBOARD

PARTICIPANTS	329,750
TEAMS	15,873
LEAGUES	2,574
VOLUNTEERS	989,250

The program has been cited by governmental, educational, civic, religious and recreational organizations throughout the world, including: Freedoms Foundation, 67th Congress of the United States, National Federation of State High School Associations, and the International Film Festival-Cannes, France.

Babe Ruth Baseball is a non-profit, educational organization and is an active member or associate participant in such organizations as: American Alliance for Health, Physical Education and Recreation, Major League Baseball, National Baseball Hall of Fame and Museum, National Federation of State High School Athletic Associations, National Recreation and Parks Association, The Athletic Institute, United States Olympic Committee and World Leisure and Recreation Association.

Several firms and organizations have aligned themselves with Babe Ruth Baseball for the purpose of supplying goods and services to the program and to afford income producing projects. Some of them include: Foundation Life; Aetna Life & Casualty Co.; Rockwell International; Athletic Institute; R.T. French Co.; Time-Tel Marketing; Hillerich & Bradsby; Tuckersharpe Pen Co.; NASCO, Inc.; Slush Puppie.

The Babe Ruth program provides competition at the local level in four major divisions ... Bambino, the 13-year-old Prep League, 13-15 division and 16-18 division. In addition to local league play, most divisions of Babe Ruth Baseball may follow a tournament trail that takes teams from district, to state, to regional and on to World Series competition.

The highlights in any year in the 13 Prep, 13-15 and 16-18 Divisions are the Babe Ruth World Series which provides youths from eight regions (plus a host team) a mental, physical and cultural experience of a lifetime. Using the host family plan, youths from across the country are housed in the homes of families in the World Series host city during the double elimination tournament.

From this World Series competition, particularly the 16-18 year-old division, thousands of youths have been seen by scouts and offered college scholarships as well as Major League contracts. To date, more than 250 Babe Ruth graduates are active in the Major Leagues.

BREAKFAST OF CHAMPIONS

Several groups or organizations have helped Babe Ruth Baseball through their sponsorship of the Breakfast of Champions, served each year at the World Series. The following is a list of these sponsors:

AETNA LIFE INSURANCE CO.
AMERICAN BASEBALL CAP
DUDLEY SPORTS CO.
ELECTRO-MECH. CORP.
HILLERICH & BRADSBY
HUTCH ATHLETIC GOODS
J. deBEER & SON
JOHNSON & HIGGINS
LION BROTHERS

MACGREGOR
MEDALIST INDUSTRIES
PITTMAN RUBBER CO.
RAWLINGS
J.R. RICHARDSON
RUSSELL ATHLETIC
WILSON SPORTING GOODS
WORTH SPORTS COMPANY

Welcome To Frederick Babe Ruth Players and Fans



GOOD LUCK!

From All The Folks At
**Frederick County
National Bank**



Established 1818

1 North Market St. • 1602 Rosemont Ave. • 1303 E. Patrick St.
Phone 662-2191 • Phone 662-6444 • Phone 662-0660

"Where Banking Is A Pleasure"

Member FDIC

Best Wishes

For A



Successful

Series

Noland Company
300 Scholl's Lane
Frederick, Maryland 21701
Telephone (301) 663-9541

THE IMMORTAL BABE RUTH

George Herman "Babe" Ruth was born in Baltimore, Maryland and although not an orphan, he attended St. Mary's Industrial School for Boys (a combination orphanage and correctional school).

Although he received only \$600 for his first professional contract, later he was to become the highest paid athlete in America when he received \$80,000 for one year with the Yankees. When Babe asked for the \$80,000 there was one who said: "You want more dough than the nation pays the President." Babe replied: "Well I certainly had a better year than Hoover."

He promised to hit a home run for ailing youngster in a hospital bed — and did. He met a somewhat startled president of the United States and said: "Hot as hell, ain't it Prez?"

Time was when 10 or 12 homers would lead the league. The Babe made that look silly.

He was one of the most appealing sports figures of America. Whether he hit a ball into the next county or struck out it was always with a picturesque flourish.

The Babe could never remember a name. Not even the names of his own teammates. He called boys and men "Kid" and women under 35 were "sister" and the older ones were "Mom". The Babe was honest, warm and friendly with a natural approach. People of all ages were attracted to him by the Babe's tremendous personal magnetism.

The Babe crowded spectacular adventure on a stage which extended from Baltimore to Paris; from Yankee Stadium to Tokyo.

He died August 16, 1948 from cancer. He was 53.

Some 33 years after his death, the immortal Babe Ruth is still remembered. Many of his records still stand. In living tribute to one of the greatest figures baseball has ever known, Babe Ruth Baseball provides thousands of youths each year the opportunity to play in our national pastime, thus fulfilling one of the Babe's greatest dreams: "I live with one great hope in mind: to help kids who now stand where I stood as a boy."

Born February 6, 1895.

Was 6'2" and weighed 215 pounds.

Threw and batted lefthanded.

*Married Clair Merritt
Hodgson on April 17, 1919.*

Hit 714 home runs, lifetime.

Hit 60, 50, 54, 54, 49 home runs in his big season.

Played in the major leagues for 22 years.

Hit 15 World Series homers.

Hit one home run in the 1933 All-Star game.

Received \$600 for his first professional contract with the Baltimore Orioles.

As a pitcher, he hurled 29 consecutive scoreless innings in World Series play.

Played in 2,503 major league ball games.

Batted in 2,197 runs.

Scored 2,161 runs.

Had a major league fielding average of .968.

Wore a light brown cap, smoked cigars.

Established or equaled 54 major league records.

Sold to New York Yankees for \$125,000, January 3, 1920.

Released to Boston Braves, February 26, 1935.

Hit his first home run in the major leagues off Jack Warhop of New York on May 6, 1915.

His longest home run was hit in a spring exhibition game at Plant Field in Tampa, Florida and was measured at 508 feet.

He called his shot in the 1932 World Series against the Chicago Cubs for one of the most dramatic home runs ever.



It is a tremendous honor for the Frederick community to play host to the 13-year old Babe Ruth World Series. We are proud to salute all of the Babe Ruth World Series participants. Your family and friends are very proud of you and as corporate citizens of the Frederick area, we also extend our best wishes to you. Good luck and may all your hits be Giant ones!

Giant Food Inc.
Frederick County Square Shopping Center
Route 40 & Baughman's Lane
Frederick, Maryland 21701





**Sneez-
King**

13th & East Street
Frederick, MD

**The finest in
soft serve ice cream!**

**Sundaes
Cones
Shakes
Sub & Sandwiches**

662-8484 for Carry Out



MEMORABLE TOUR THE BABE RUTH TRAIL

For baseball fans everywhere and Babe Ruth aficionados specifically, we suggest an unforgettable trip along the Babe Ruth trail.

The Babe Ruth Shrine & Museum, Baltimore, MD. Located near the Babe's birthplace, this attraction contains much memorabilia and gives an insight into the Babe's early years.

Babe Ruth Baseball International Headquarters, Trenton, N.J. Visit the nerve center of the largest teenage baseball program in the world.

Switlik Park, Hamilton Twp., N.J. The baseball facility where Babe Ruth Baseball first started in 1952. The Babe Ruth memorial plaque hangs here.

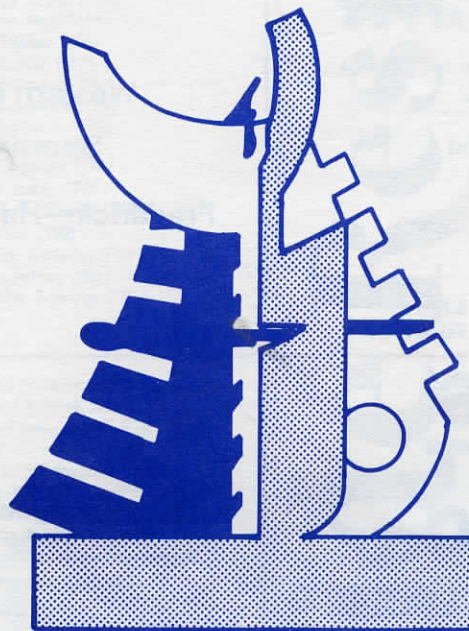
Yankee Stadium, New York, NY Visit the "house that Ruth built." Highlights of this stop include the Babe Ruth monument in center field, the life-size portrait of the Babe and right field stands where the Babe parked them.

National Baseball Hall of Fame, Cooperstown, NY A highlight of any tour. This mecca of baseball legends contains the "Babe's Corner" with equipment, uniforms, locker, awards, etc.

Fenway park, Boston, MA. Home of the annual Babe Ruth Day, the Boston Red Sox and the Jimmy Fund. One of the few "friendly" old ballparks left in the country. This is the site of many of the Babe's great feats.

For information on visits to any of the above sites including open hours, admissions, directions, just write to Babe Ruth HQ, P.O. Box 5000, Trenton, NJ 08638.

CONGRATULATIONS and BEST WISHES



EASTALCO ALUMINUM COMPANY

5601 Manor Woods Road
Frederick, Maryland 21701

An Equal Opportunity Employer

24-Hour Auto Service Drop-off at **Sears** Frederick Store!!

For your convenience, you can leave your car at Sears Auto Center in the Francis Scott Key Mall BEFORE WE OPEN OR AFTER WE CLOSE.

HASSLE-FREE and Easy as 1-2-3

- 1.** Fill out the special envelope provided, checking services you want performed.
- 2.** Place the keys in the envelope and leave car in designated area.
- 3.** Drop envelope in a special mail slot at our Auto Center.

In most cases you can pick your car up by 5 P.M.
This Service is Available Monday Through Friday

Compliments Of



Western Maryland's Largest
Sporting Goods Stores

Frederick—Hagerstown—Cumberland

BARNES CABINET SHOP INC.

**RESIDENTIAL • COMMERCIAL
CUSTOM CABINETS
KITCHENS - BARS - VANITIES
BUILT-IN WALL UNITS
BOOKCASES
QUALITY WORKMANSHIP**



662-2382

340 E. 5th

FREDERICK

The Sportsmanship Code of Babe Ruth Baseball

*Develop a strong, clean, healthy body,
mind and soul.*

*Develop a strong urge for sportsman-
like conduct.*

*Develop understanding of and respect
for the RULES.*

*Develop courage in defeat, tolerance
and modesty in victory.*

*Develop control over emotions and
speech.*

*Develop spirit of cooperation and team
play.*

Develop into real, true CITIZENS.



BABE RUTH HALL OF FAME

International Babe Ruth Baseball established a Hall of Fame in 1968 to honor those persons and organizations who have played a vital role in the development of the baseball program for young people 18 and under.

Since its inception, some 59 persons or organizations have been afforded the esteemed honor of being selected for induction by the Babe Ruth Baseball International Board.

Those who have been inducted include—

Individuals:

Mrs. Babe Ruth ('68)	Mrs. F. Warren Green ('74)
Marius Bonacci ('68)	Manuel Azevedo ('75)
George Walker ('68)	Ray Bell ('75)
Dr. J. Goodner Gill ('68)	Joseph Cookson ('75)
Vada Pinson ('68)	John (Sharkey) Laureno ('75)
Col. Dominic George ('69)	Del Schrader ('75)
George Barr ('69)	George Wyse ('75)
Ford Frick ('69)	William Hollifield ('76)
Vern Hernlund ('70)	Wilf Sadler ('76)
Mickey Lolich ('70)	L.O. Cutler ('77)
Stan Gray ('71)	Russ Harper ('77)
Ed Hunt ('71)	Paul Sayevich ('77)
Oscar Twillman ('71)	Pete Romano ('78)
Jack Gilliam ('72)	Tom Dowd ('79)
Frank Stapleton ('72)	Francis Fogle ('79)
Carl Lundquist ('72)	Oscar Luzzi ('79)
Jan Hartog ('73)	Alfred G. Stanton ('79)
Samuel Welch ('73)	Ed Wiest ('80)
Paul Carey ('73)	William Crowley ('81)
Dr. William G. Williams ('74)	Ralph Sellers ('81)
Lawrence P. Moser ('74)	Nicholas Salvage ('81)
J. Russell Lacy ('74)	

Organizations:

Hamilton Twp. Babe Ruth League ('68)	National Federation of State High School Athletic Association ('76)
City of Glendive, Mont. ('69)	National Baseball Hall of Fame ('77)
Coca-Cola Company ('70)	R.T. French Company ('78)
Hillerich & Bradsby Company ('70)	Johnson & Higgins ('78)
The Athletic Institute ('71)	City of Douglas, Ariz. ('78)
Aetna Life & Casualty Company ('72)	American Baseball Cap Co. ('79)
J. de Beer & Son ('72)	The Sporting News Newspaper ('79)
Lannom Manufacturing Company ('73)	Hanley Hose Fire Company ('79)
Office of the Commissioner of Baseball ('75)	Wilson Sporting Goods Company ('79)
Boston Red Sox ('76)	Mennen Company ('80)

BABE RUTH BASEBALL ADVISORY COMMITTEE

Babe Ruth Baseball has formed an Advisory Committee whose purpose is to provide assistance and aid to Babe Ruth Headquarters on specific projects and/or research.

Individuals serving on the Committee must be interested in developing better citizenship as well as physical and mental maturity of youngsters through teenage baseball.

DR. BILL ARCE	CARL ERSKINE	JACK MCGRATH
HOWARD BERK	DAVE "BOO" FERRISS	AL MONCHAK
BOBBY BRAGAN	BILL FRAZIER	WALLY MOON
GEORGE CASE	VERNON (LEFTY) GOMEZ	TOM PETROFF
ALAN CLARK	TOM GORMAN	BROOKS ROBINSON
ROD DEDEAUX	DANNY LITWHLER	MARTY SPRINGSTEAD
RUSSEL DIETRICK	PETER LOWENSTEIN	EDDIE STANKY
AL DOWNING	CARL LUNDQUIST	GENE WOODLING

Stateside Restaurant

**Worth
Looking
for**



**506 East Church
Frederick, Md**

*Featuring
"Country-Style"
Cooking*

**Telephone
663-9803**

**Carry-Out
695-8760**

OPEN

6:00 AM - 10:00 PM, Monday Through Thursday
6:00 AM - Midnight, Friday and Saturday
8:00 AM - 1:00 PM, Sunday Morning (Breakfast)

Beer, Wine & Cocktails are Now Available

FREDERICK CONTRACTORS, INC.



GENERAL CONTRACTOR

- Commercial & Industrial Buildings
- Metal Buildings
- Demolition & Wrecking
- Equipment Rental

662-4103

662-4104

PO Box 428
Route 355 Frederick—Frederick, MD

Babe Ruth Baseball is conducted, for the most part, according to the official rules of baseball. In the 13-15 and 16-18 divisions all games are played on regulation diamonds, while Bambino Division games are played on 60-foot diamonds. In all divisions of Babe Ruth Baseball exceptions to regulation baseball rules, designed to protect young players, are used. Some include lesser innings, pitching limitations, protective equipment and accident insurance.

BABE RUTH BASEBALL TOURNAMENT RULES AND REGULATIONS

For clarification and ease of scoring for the news media, scouts, coaches and other spectators not familiar with Babe Ruth rule exceptions, we are including some of the major "special rules" covering Bambino, 13 year-old, 13-15 and 16-18 tournament play.

Team Composition—Each Bambino, 13 year-old, 13-15 tournament team may be composed of fifteen players, one manager and two coaches. Each 16-18 tournament team may consist of 18 players, one manager, two coaches.

Elimination—Tournaments shall consist of double loss elimination play.

Official Games—Tournament games shall be seven complete innings, with the exception of the Bambino Division which shall be six innings. If game is called before completion, it shall be resumed and completed from the point of discontinuance.

10 Run Rule—Any 13 year old tournament game must be terminated once becoming regulation if either team is ahead by 10 or more runs and have had equal times at bat or the home team is leading.

Protests—A protest committee shall be appointed and in attendance at all tournament games. All protests shall be resolved by this committee at the time of the play and decisions are final.

Bats—Metal bats are allowable within the specifications in the rules.

Headgear—Protective headgear shall be worn by all batters and baserunners at all times.

Catcher's Mask—The player warming up the pitcher on the playing field must wear a catcher's mask.

Re-Entry—Any one of the nine starting players may be withdrawn and re-entered once providing such player occupies the same batting position whenever he is in the lineup.

Pitching—No pitcher in 13-15 or 13 year old tournament play shall be allowed to pitch in two games in succession nor shall he be allowed to pitch in more than ten innings in any one game. This rule does not apply to 16-18 tournament play, as there are no restrictions. In the Bambino Division, no pitcher may pitch more than 6 innings in a calendar week. Trips to the mound by managers or coaches may not exceed one trip per pitcher per inning, a second trip shall result in the removal of the pitcher.

It is not mandatory for a pitcher to take the sign from the catcher while standing on the rubber.

Playing field—All Babe Ruth games, both regular league and tournament, are played on regulation baseball fields, with the exception of Bambino Division games which are played on 60-foot diamonds.

For additional rule variations, please refer to Babe Ruth Baseball 1982 Rules and Regulations.

SERVING THE SERIES



FOUNTAIN PROFESSIONAL CENTER
15 W. Seventh Street
Frederick, MD 21701
Ph: 663-9551

PREVENTION, TREATMENT AND
REHABILITATION
of
PAIN, INJURY AND DISABILITY ASSOCIATED
with
SPORTS AND FITNESS ACTIVITIES

Athletic Training • Physical Therapy

Eldridge Ward, L.P.T., Director
Russell Smith, L.P.T.
Scott Teets, L.P.T., A.T.C.

*Best Of Luck To All The Teams
from*



Computer Systems Division

see us for automating your business.

Reporting Group

for court reporting services

word processing

video depositions

town meetings

conferences

23 E. Church Street, Frederick, MD 21701
695-8060

FREDERICK I-70 TRUCK CITY

Motor Inn & Silver Dollar Lounge

Congratulations and Best Wishes to the Babe Ruth 13
Year Old World Series

I-70 & Rt. #355
Frederick, MD 21701



**This Coupon Entitles You To
One 1/2 Price Drink In The
Silver Dollar Lounge**



COUPON

COUPON

107 Modern Rm. Motel
24 Hr. Guest Laundry
2 Double Beds-Color T.V.
663-0500

Complete Truck Stop Service
Open 24 Hrs. A Day
Restaurant-Buffer Daily
662-8556

Visit our Lounge
Live Country Music
Tues.—Sun. Nights
662-0700



Royd Smith Realty

2 S. WISNER STREET • FREDERICK, MARYLAND 21701

PHONE: (301) 662-0977

*Congratulations to all the players,
their families, and coaches!*

Kmart would like to welcome everyone to the Frederick Babe Ruth World Series,
and invite you to shop our Frederick store. Mon.-Sat. 9:30 a.m.-9:30 p.m.



\$1 **PRESCRIPTION COUPON** **\$1**

— STORE —

3131 Kmart
FREDERICK COUNTY SQUARE
SHOPPING CENTER
FREDERICK, MARYLAND
662-7444

PRESENT THIS COUPON AND RECEIVE
\$1.00 OFF ON ANY NEW PRESCRIPTION.
REFILLS AT OUR LOW EVERYDAY
DISCOUNT PRICE

WORTH TO
\$1
MAXIMUM

\$1 **LIMIT ONE PRESCRIPTION PER COUPON** **\$1**

VALUABLE COUPON

CODE No.94-68-70

FRANK R. SMITH, JR.

Smith, Keeney, Basford

FUNERAL HOME

106 East Church St. — Frederick, Md. 21701

662-2175

Former Partner And Associates
successors to

M. R. ETCHISON AND SON

Over 125 years service to Frederick County

ROBERT W. KEENEY

RICHARD C. BASFORD

BUCHANAN and ASSOCIATES

Formerly Henry M. Buchanan, C.P.A., P.A.

CERTIFIED PUBLIC ACCOUNTANTS

"KNOWING YOUR BUSINESS IS OUR BUSINESS"

AUDITING • ACCOUNTING • TAXES • MANAGEMENT ADVISORY SERVICE

Individual and Corporate Tax Preparation and Planning

—Small and Medium Business Accounting Services—
Payroll Taxes • Financial Statements • Bookkeeping
Pension and Profit Sharing Plans
Tax Planning and Preparation

—Individual Tax Planning and Preparation—
Income and Estate Planning

—IRS Representation—

Call Carl Hildebrand, C.P.A.

694-5775

23 East Church Street • Frederick, MD 21701



BUCHANAN and ASSOCIATES

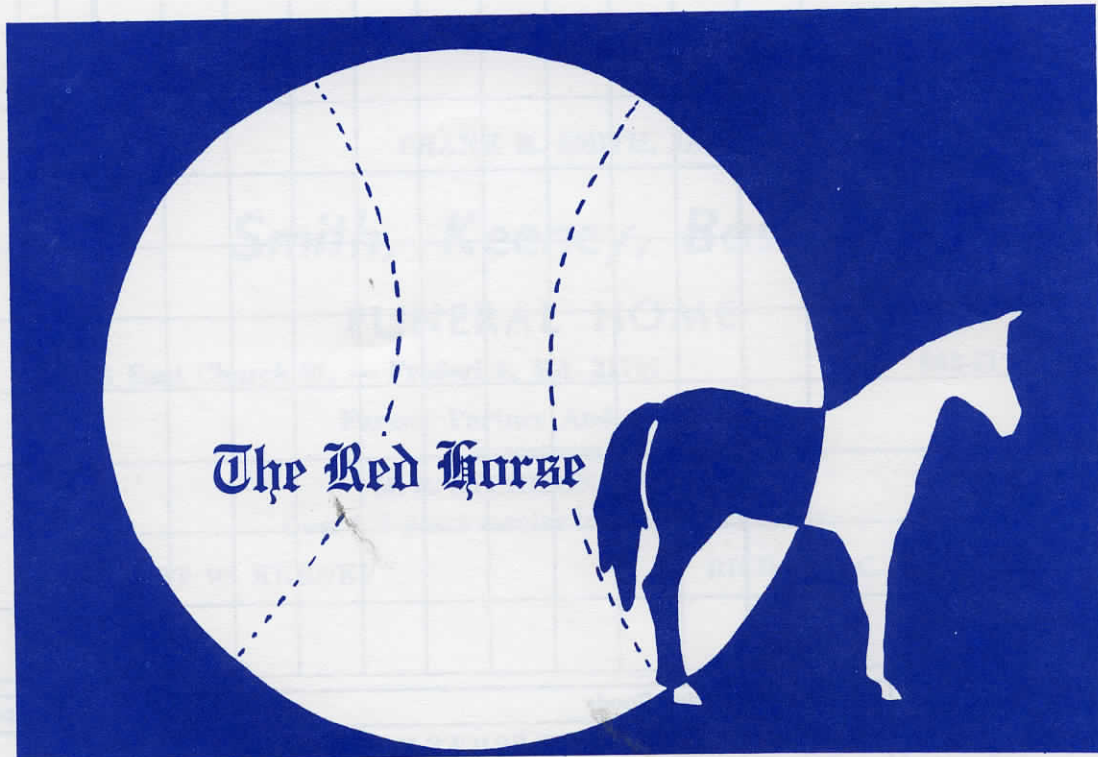
Team:

POS. 1 2 3 4 5 6 7 8 9 10 A B R H P O A E

Ron Twentey's  of Frederick	Mail Order Sporting Goods		Call 824-7644 For An Appointment	
	<i>LOWEST PRICES IN THIS AREA</i>			
	 PUMA ROCKET FOOTBALL SHOES SALE \$35.95	 Gloves/Shoes WORTH & EASTON BATS	 ALL STAR PRO LEATHER SALE HI - \$36.95 SALE OX - \$34.95	

Team:

POS. 1 2 3 4 5 6 7 8 9 10 A B R H P O A E



The Red Horse
Steak House | **Motor Inn**

996 WEST PATRICK STREET

301-663-3030

998 WEST PATRICK STREET

301-662-0281

Fine Steaks

Fresh Seafood

Cocktails

72 Modern Units

Color Television

Climate Control Rooms

FREDERICK, MARYLAND



Team:

POS. 1 2 3 4 5 6 7 8 9 10 A B R H P O A E

LOVIN', HURTIN', CHEATIN',
FLIRTIN', DRINKIN', LYIN',
LAUGHIN', CRYIN' SONGS.



wthu • 7450

Team:

POS. 1 2 3 4 5 6 7 8 9 10 A B R H P O A E

GOOD LUCK TO ALL 13 YEAR OLDS IN
1982 BABE RUTH WORLD SERIES

COMPLIMENTS OF

The Letter Shop

FREDERICK
663-3175

• WESTMINSTER
848-4301

• HAGERSTOWN
293-2393

206-208 WEST PATRICK STREET - FREDERICK, MARYLAND 21701

DIVISION OF
THE CREDIT BUREAU
CREDIT REPORTS AND COLLECTIONS

OVER 50 YEARS OF COMMUNITY BUSINESS
SERVICE IN CENTRAL MARYLAND

LETTERS
RESUMES
OFFSET PRINTING
MAILING
NEWSLETTERS
CHURCH & CLUB BULLETINS
PHOTOCOPIES

Team:

POS. 1 2 3 4 5 6 7 8 9 10 A B R H P O A E



La Paz
MEXICAN
RESTAURANT

OPEN FOR DINNER
7 NIGHTS

LUNCH SERVED MON-FRI
COCKTAILS • MEXICAN BEER
LIVE ENTERTAINMENT
THURS-SAT



694-8980



18 MARKET SPACE FREDERICK
BEHIND PARKING DECK

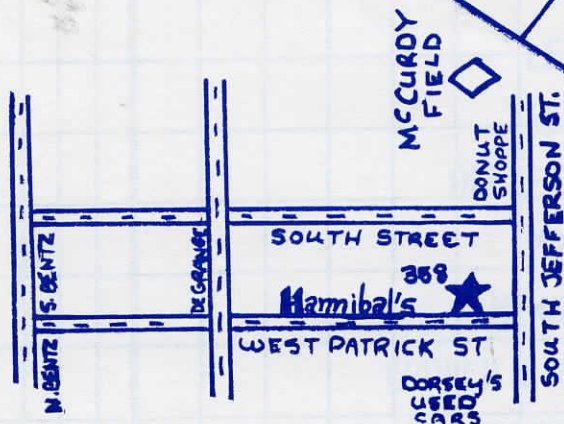
Team:

POS. 1 2 3 4 5 6 7 8 9 10 A B R H P O A E

MAKE A HEADS UP PLAY
AND
SLIDE INTO

Hannibal's

Fine Food
and
Ardent Spirits



358 W. PATRICK
FREDERICK, MD.

301-694-8668

Team:

POS. 1 2 3 4 5 6 7 8 9 10 ABR H P O A E

Monday - Friday 6 - 9

SEE THE PROS AT

Saturday 9 - 5

Bob Roberson's Sports Center, Inc.

Specializing in Team Sporting Goods

695-8690

134 East Street

Shab Row

Frederick, MD.

Team:

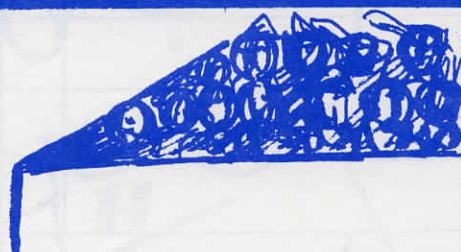
POS. 1 2 3 4 5 6 7 8 9 10 ABR H P O A E

A Slice
of Cheese Pizza
and
Can of Soda

99¢

Valid only at
FAMIGLIA II
location.

Bat-er-up for the best Pizza in town....



Get into the Famiglia Game, with pizza, subs,
spaghetti, stromboli, calzones, lasagne, antipasta,
beer, wine and so much more.....

"GOOD LUCK BABE RUTHERS"

We're Just Up The Street

FAMIGLIA PIZZA

316 S. Jefferson St., Frederick

Open daily 11 to 11, Fri & Sat 11 to 1
Sunday 1 to 11, Closed Tues.

663-1110



Team:

POS. 1 2 3 4 5 6 7 8 9 10 A B R H P O A E



Frederick Petroleum Corporation

FUEL OIL – GASOLINE – DIESEL
Frederick, MD.
662-7577


Auto Delivery
Senior Citizen Discount

Team:

POS. 1 2 3 4 5 6 7 8 9 10 A B R H P O A E

*Best Wishes for
a Successful Series*

County Commissioner
& Mrs. Charles C. Smith



**WAGON WHEEL
PRODUCE
DAIRY DELITE**
½ Mile West of Waverly Drive
on Route 40 West

CALL AHEAD TO HAVE
YOUR ORDER READY

662-4422

OPEN 10:30 A.M. to 10:00 P.M.
7 DAYS A WEEK



11 North Market Street
Frederick, Maryland 21701
(301) 694-7344 / 7345

COBLENTZ & SMITH, INC.

INSURANCE - ALL KINDS

PIA

122 West Church Street
Frederick, Maryland 21701
Phone 301-663-4183



J. Vernon Coblentz

Robert J. Smith

ARCHIE E. ROGERS, JR.

FREDERICK 301-663-431
UNION BRIDGE 301-775-267

Rogers Office Supply & Equipment

"THE DEPENDABLE ONES"

110 N. MARKET ST., P. O. BOX 35
FREDERICK, MD. 21701

10% Discount to Babe Ruth World Series Visitors.

Landis Jewelry Store, Inc.

TELEPHONE: 662-1581

Keepsake
Diamonds

**23 SOUTH MARKET STREET
FREDERICK, MD. 21701**

Bulova
Watches

ESTABLISHED 1893

*Compliments
of*
The Potomac Edison Company

Gilbert's Car Wash

Jefferson and Pearl Street
Frederick, Maryland 21701

Have your car washed after the game!



Sterling E. Bollinger, Sr.

P. O. Box 218
13 Water Street
Thurmont, Maryland

Business: 271-2771
271-2322
Residence: 271-7752



TRAVELERS Insurance Companies
FINANCIAL AND INSURANCE PLANNING
AMERICAN STATES INSURANCE COMPANIES

SHIPLEY'S BOTTLING WORKS, INC.



Established 1874
**521 NORTH MARKET ST.
FREDERICK, MARYLAND
663-5611**

KING OF BEERS.

F&M AND YOU.

**A big part of Frederick's past. A bigger
part of Frederick's future.**

Farmers & Mechanics National Bank • Member FDIC



*Jefferson Street at Pearl
Frederick, Maryland, 21701*

663-1116

*111 North Market Street
Frederick, Maryland, 21701*

663-1113

TOWN and COUNTRY Restaurant

*Specializing in Fresh Bay Seafood
and
Fresh Cut Steaks*

Hardshell Crabs
Buffets—Wed.-Sun.
Open 7 Days A Week

Two Miles West of Fredericktowne Mall
Frederick, Maryland

Good Luck Champs

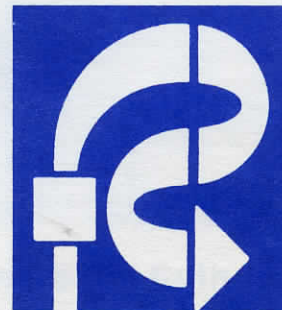
Compliments of

FREDERICK PRODUCE CO. INC.

Wholesale Food Distributors Since 1935

321 East Fifth Street
Frederick, Maryland
Phone: 663-3171

SERVICE — —QUALITY

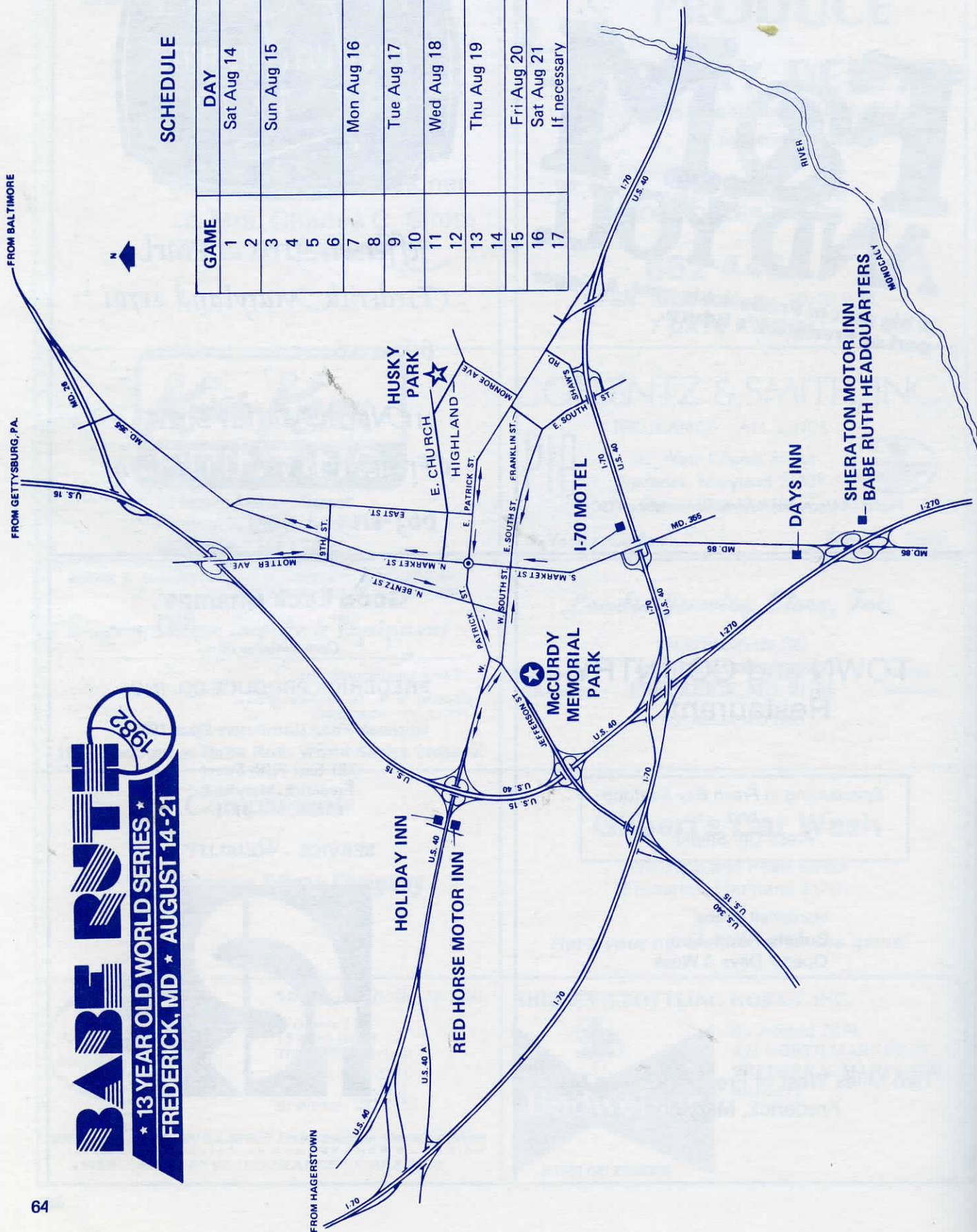


BABE RUTH

★ 13 YEAR OLD WORLD SERIES ★
FREDERICK, MD ★ AUGUST 14-21

SCHEDULE

GAME	DAY	TIME
1	Sat Aug 14	6 PM
2		8 PM
3	Sun Aug 15	1 PM
4		3 PM
5		6 PM
6		8 PM
7	Mon Aug 16	6 PM
8		8 PM
9	Tue Aug 17	6 PM
10		8 PM
11	Wed Aug 18	6 PM
12		8 PM
13	Thu Aug 19	6 PM
14		8 PM
15	Fri Aug 20	7 PM
16	Sat Aug 21	1 PM
17	If necessary	30 min. after





**A game well played is like a life well lived.
It takes the same qualities:
courage, commitment, generosity, optimism.
And it has the same reward: self-respect.**

**Welcome and best wishes to the players in the Babe Ruth "13
Year Old World Series"**

The Gulf Oil Corporation.

